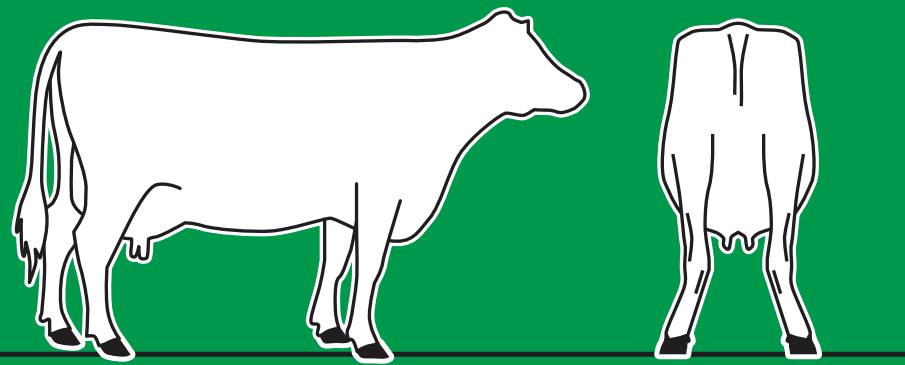


ASSESSMENT OF A CULL COW'S MOBILITY

DECISION



**SOLID STANCE
MOVES EASILY, NO LIMP**

TRANSPORTATION



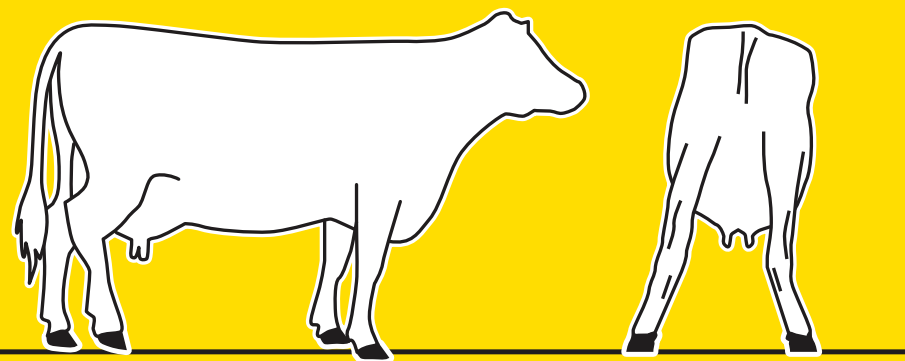
AUCTION



ABATTOIR



EXPORTATION



**LAMENESS EASILY IDENTIFIED
MOVES ON ALL 4 LEGS, BUT WITH A LIMP**

ADAPTED
TRANSPORTATION



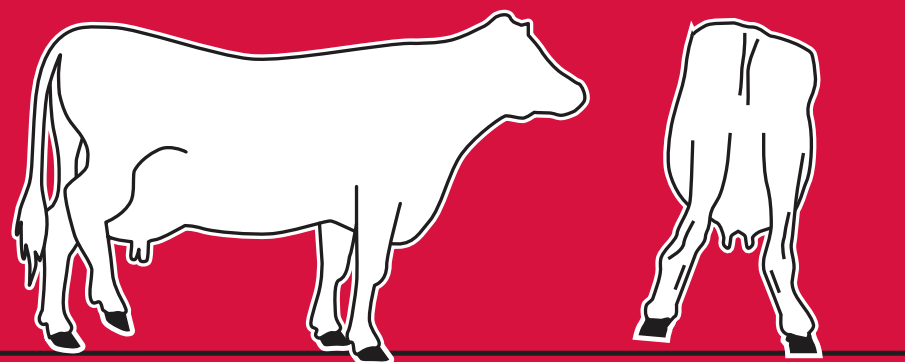
AUCTION



NEARBY
ABATTOIR



EXPORTATION



**STANDS ON 3 LEGS
RELUCTANT TO MOVE. UNABLE TO STAND
FOR PROLONGED PERIODS.**

TRANSPORTATION



AUCTION



ABATTOIR



EXPORTATION



OBSERVE BEFORE CULLING

WHEN IN DOUBT,
CONSULT YOUR VETERINARIAN.

PLAN OBSERVE DECIDE



**ALONG WITH ASSESSING ITS MOBILITY,
CERTAIN FACTORS MUST BE CONSIDERED
BEFORE CULLING AN ANIMAL.
WHEN IN DOUBT, CONSULT YOUR VETERINARIAN.**

ADVICE FROM PRODUCERS

*"I avoid sending
a **problem** in the truck."*

*"Sometimes, it **pays more**
to let the animal rest
for another week before
shipping it to the auction."*

*"You can't go wrong
if you **call** your
veterinarian."*

OBSERVING THE CONDITION OF THE FLESH CAN HELP YOU DECIDE



1 - very lean



2 - lean



3 - average



4 - muscled



5 - fat

Contact
Les Producteurs de bovins du Québec:
450 649-0540, Station 8559

Les Producteurs
de bovins du
Québec 

PLAN BEFORE CULLING

**ASSESSMENT OF A
CULL COW'S MOBILITY**